

Available in **THREE** Frame Colours!



**WHITE**



**SAND**



**BLACK**

**LIFE'S COOLER IN THE SHADE**

- Available from 10' wide to 23' wide
- Projections include 8', 10', & 12'
- LED lights are built directly into the arm, includes two brightness settings
- Comes with built-in motor
- Elbows in the arms have a dual stainless steel cable covered in PVC sheathing



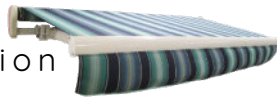
- Strong inner spring mechanism ensures ease of use
- Stainless steel hardware will not rust
- Heavy duty forged, lateral arm attached for durability
- High grade powder coat finish
- Pitch can be adjusted from 0° to 45°
- A 40mm Galvanized powder coated steel back bar adds extreme stability
- A 78mm galvanized steel roller tube ensures easy operation

**NOW AVAILABLE WITH SHADE PLUS!**

- Maximum Drop 60"
- Maximum Width 20'
- Maximum Projection 12'
- Available in Soltis & Sunbrella Fabrics



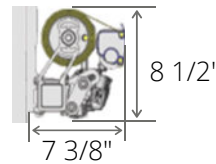
**without hood cover**  
Ideal for Soffit Installation



**with hood cover**  
Ideal for Wall Installation

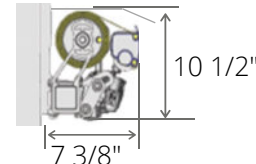


**WALL MOUNT WITHOUT HOOD**



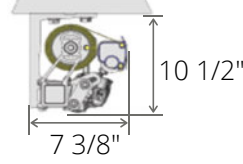
**WALL MOUNT WITH HOOD**

**WALL MOUNT WITH HOOD**



**SOFFIT MOUNT WITHOUT HOOD**

**SOFFIT MOUNT WITHOUT HOOD**



**SOFFIT MOUNT WITH HOOD**

**Custom manufactured with the best fabric!**



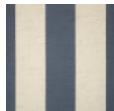
10-Year Warranty

Visit [www.sunbrella.com](http://www.sunbrella.com)

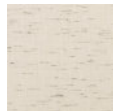
Sunbrella is the North American leader in outdoor acrylic 100% solution dyed fabric!



**SOLID**



**STRIPED**



**TEXTURED**



5-year Warranty

**BUILT-IN MOTOR Dooya Motor**

WIRELESS WIND SENSOR AVAILABLE



MANUFACTURED IN KITCHENER, ONTARIO FOR OVER 45 YEARS



1 - 3 Hoffman Street, Kitchener, ON N2M 3M5

Toll Free 1-800-363-8533 • 519-579-3950 • Fax 519-579-2533

[info@macdonaldawning.com](mailto:info@macdonaldawning.com) • [www.macdonaldawning.com](http://www.macdonaldawning.com)

**Our Commitment to our Customers!**

Read Our Reviews Online



Visit Us On



Facebook



Instagram



LinkedIn